

“Environment and economy

are two sides of the same coin.
If we cannot sustain the environment
we cannot sustain ourselves.”

Wangari Maathai



WOOD

WOOD

High Texture



Olde Rincon
SSF 2255

AU

Recommend



Baltimore Walnut
SSF 2265

AU



Noce Brenta
SSF 2297

AU



Rincon Wood
SSF 2256

AU

Recommend



Brenta Wood
SSF 2298

AU



Season Wood
SSF 2312

AU

WOOD

High Texture



Saltilo Wood
SSF 2294

AU

Recommend



Chech Design
SSF 2063

AU



Ulmus
SSF 7652

AU



Cabin Nelson
SSF 2257

SG

Recommend



Finesse Elegant
SSF 2258

SG



Mountain Pine
SSF 7252

SG

High Texture



Canadian Larch
SSF 7255

SG

Recommend



Walnut Brozne
SSF 7705

SG



Scrub Oak
SSF 7411

SG



Ash Oak
SSF 7416

SG

Recommend



Salinas Oak
SSF 2219

SG



Highland Pine
SSF 7251

SG

WOOD

High Texture



Maracaibo Firm
SSF 2216

SG

Recommend



Brown
SSF 7809

SG



Spring Hickory
SSF 2284

SG



Scots Elm
SSF 2285

SG

Recommend



Ash
SSF 2117

SG



Rugen Beech
SSF 2286

SG

High Texture



Medan Teak
SSF 2287

SG

Recommend



Nomad
SSF 2295

SG



Fairfield Walnut
SSF 2309

SG



Sonoma Oak
SSF 7418

SC

Recommend



Noce
SSF 7709

SC



Crest Wenge
SSF 7506

SC

WOOD

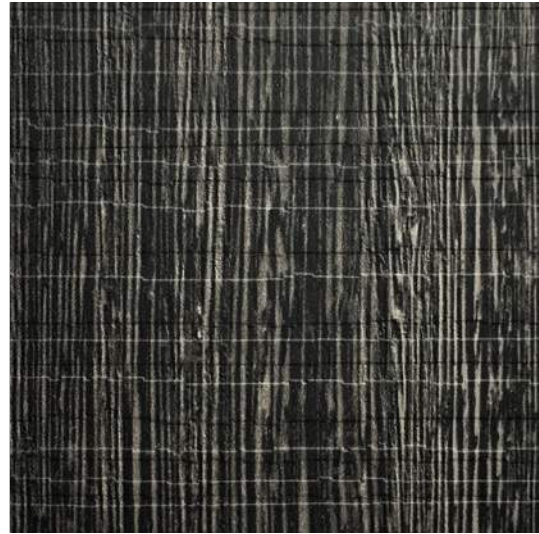
High Texture



Golden Wenge
SSF 7504

SC

Recommend



Shining Wenge
SSF 7510

SC

Recommend



Salinas Pastel
SSF 2218

SC

Recommend



Flowerish Wenge
SSF 7501

SC

Recommend

High Texture



Palau Wood
SSF 2118

SK

Recommend



Congo Wood
SSF 2126

SK



Black Wenge
SSF 1995

SK

Recommend



Wild Ebony
SSF 2125

SK

WOOD

Smooth Texture



White Teak (HZ)
SSF 2091

DM

Recommend



Natural Wood (HZ)
SSF 2093

DM



Silica (HZ)
SSF 7959

DM



Weasel (HZ)
SSF 7961

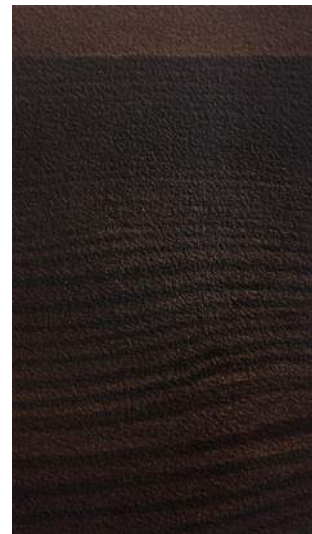
DM

Recommend



Charcoal Teak (HZ)
SSF 2094

DM



Antilop (HZ)
SSF 7962

DM

Smooth Texture



Volvo Ash
SSF 2282

BK

Recommend



Jakarta Teak
SSF 7103

TP



White Beech
SSF 7001

PO

Recommend

WOOD

High Texture



Carmine
SSF 7281

TP

Recommend



White Elm
SSF 7651

TP



Dark Katthult
SSF 2263

TP



Catapult Light
SSF 2261

TP

Recommend



White Beech
SSF 2183

TP



Iconic Beach
SSF 2242

TP

High Texture



Lorraine Walnut
SSF 7710

TP

Recommend



Weeping Beech
SSF 7003

TP

Recommend



Boston Walnut
SSF 7006

TP

Recommend



Polished Walnut
SSF 7704

TP

WOOD

High Texture



Intal Beech
SSF 7012

TP

Recommend



Mangfall Beech
SSF 7007

TP

Recommend



Salzach Beech
SSF 2271

TP

Recommend



Common Beech
SSF 7005

TP

High Texture



Cherry Morgana
SSF 7282

TP

Recommend



Moldau Acacia
SSF 7801

TP

Recommend



Sweet Acacia
SSF 7813

TP

Recommend



Golden Maple
SSF 7307

TP



Walnut Brozne
SSF 7705

TP

WOOD

High Texture



Magical Oak
SSF 1929

RM

Recommend



Zebrano Wood
SSF 7651

RM



Linning Bat
SSF 2263

RM



Shivalik Zebrano
SSF 2019

RM

Recommend



Zebra Light
SSF 2054

RM



Art Wood
SSF 2317

RM

“Every block of **stone**
has a **statue inside**,

it is the task of the sculptor
to discover it.”

MARBLE & STONE



MARBLE & STONE

Medium Texture



Grey new marble
SSF 1461

GL

Recommend



Cinder Zebra
SSF 1460

GL



Santa Marble
SSF 1459

GL



Natsu
SSF 1445

GL

Recommend



Light New Marble
SSF 1462

GL



Zebrawood Marble
SSF 1458

GL

MARBLE & STONE

High Texture



Cityscape Loft
SSF 1455

SS



Mohave Stone
SSF 1441

SS



Roman Travertine
SSF 1452

SS



Travertin
SSF 1454

RK

Recommend

“As a **designer**,
I like to work with **fabric**

that don't bleed.”

LEATHER & FABRIC



LEATHER & FABRIC

Medium & Smooth Texture



River Birch
SSF 1416

CL

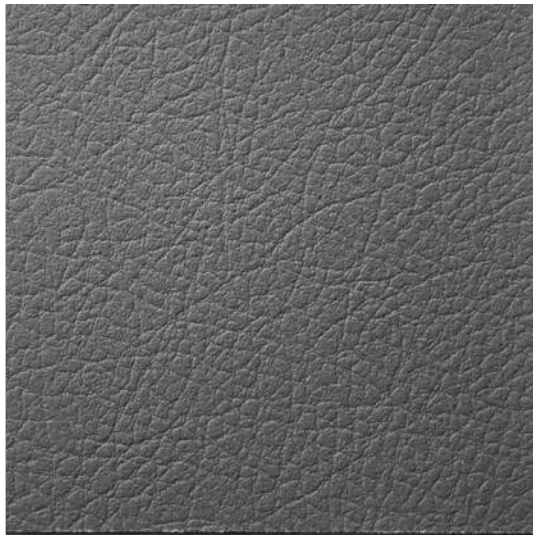
Recommend



Yellow Birch
SSF 1417

CL

Recommend



Lead Grey
SSF 1406

CL

Recommend



Grey Feather
SSF 1404

CL

Recommend

LEATHER & FABRIC

Medium & Smooth Texture



Sandy Grey
SSF 1064

CL

Recommend



City Shadow
SSF 1014

CL

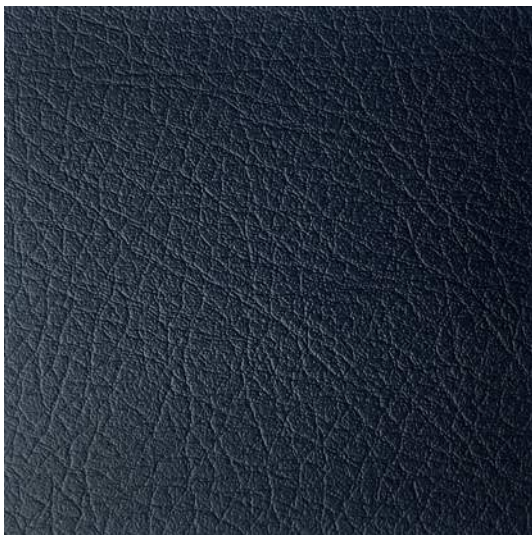
Recommend



Cherry Brown
SSF 1018

CL

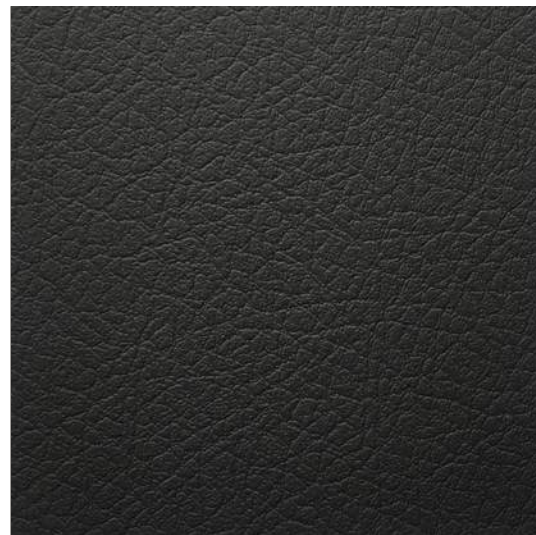
Recommend



Dark Blue
SSF 155

CL

Recommend

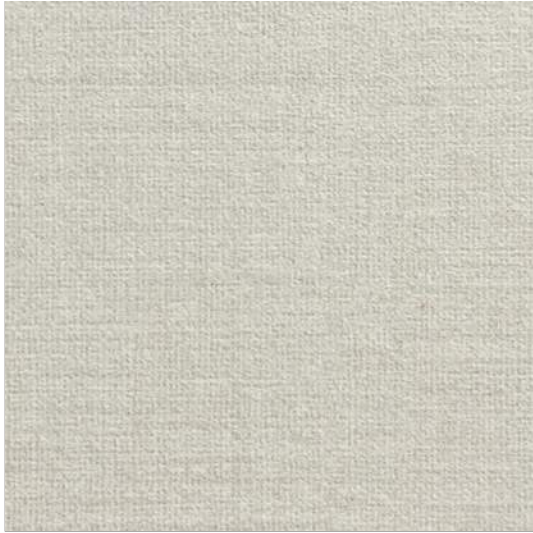


Slate Grey
SSF 569

CL

Recommend

Medium & Smooth Texture



White Fabric
SSF 1403

DM

Recommend



Offwhite Fabric
SSF 1398

DM

Recommend



Grey Fabric
SSF 1399

DM

Recommend



Chess Fabric
SSF 1394

DM

Recommend

LEATHER & FABRIC

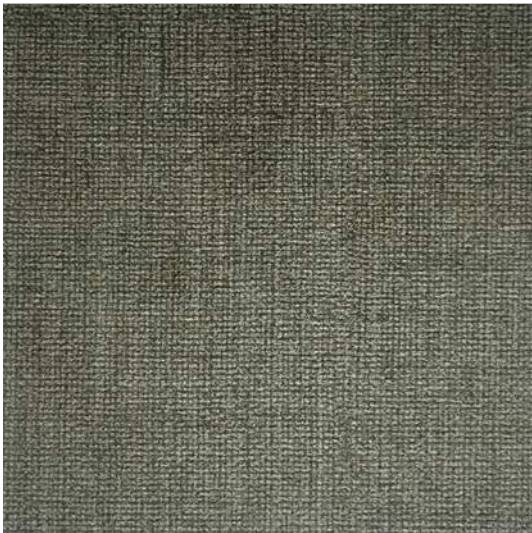
Medium & Smooth Texture



Tweed Grey
SSF 1353

DM

Recommend



Tweed Dark
SSF 1354

DM



Light Fabric
SSF 1397

DM

Medium & Smooth Texture



Twist Treble
SSF 1420

TT



Twist Magic
SSF 2206

TT



White Aluminium
SSF 1410

TT

Recommend

LEATHER & FABRIC

Medium & Smooth Texture



Brown Chess Wood
SSF 2204

TT



Fine Flannel
SSF 2207

TT



Dark Flannel
SSF 2205

TT



Onde Splash
SSF 1447

TT



Shiny Chess Wood
SSF 2203

TT



Black Chess Wood
SSF 2208

TT

Medium & Smooth Texture



Alumina Light
SSF 1383

FS



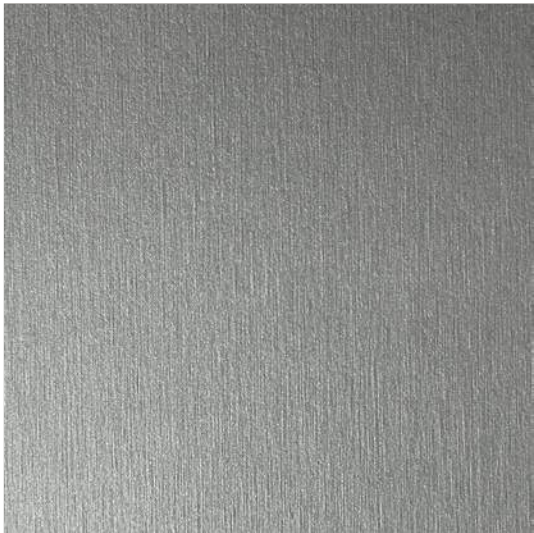
Shinning Grey
SSF 1381

FS



Light Aluminium
SSF 1411

FS



Lead Grey
SSF 1406

FS



Grey Feather
SSF 1404

FS



Grey Unimetal
SSF 1407

FS

LEATHER & FABRIC

Medium & Smooth Texture



Tweed Chocolate
SSF 1402

FS

Recommend



Dark Aluminium
SSF 1409

FS

Recommend



Grey Aluminium
SSF 1408

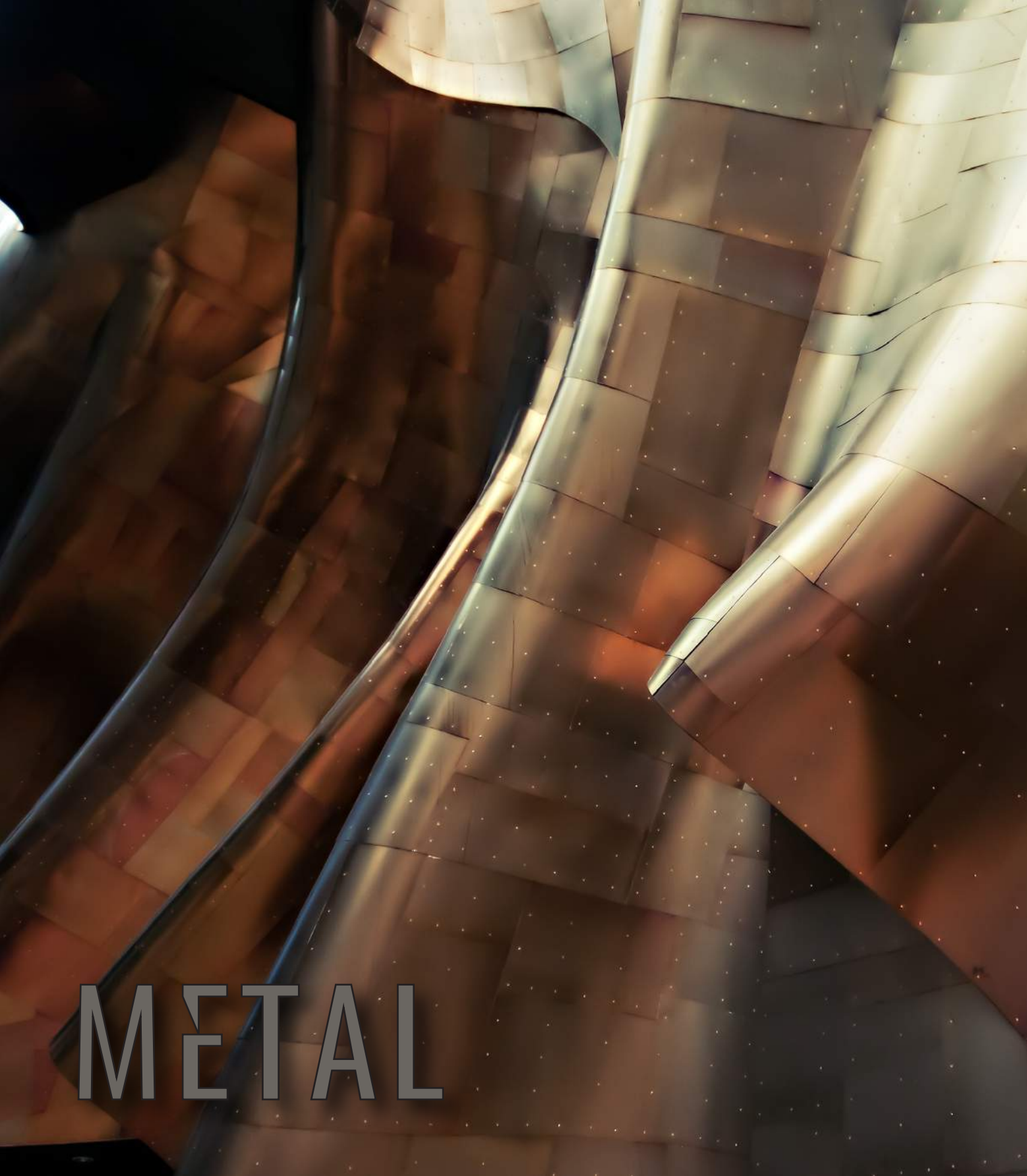
FS

Recommend

“Men are like steel.

When they lose their temper,
they lose their worth.”

Chuck Norris



METAL

METAL

Medium



Copper
SSF 9584

MT

Recommend



Gold
SSF 9585

MT

Recommend



Silver
SSF 9598

MT

Recommend

METAL

Medium



Green
SSF 9582

MT

Recommend



Blue
SSF 9583

MT

Recommend



Red
SSF 9581

MT

Recommend

“Simplicity

is the ultimate form of
sophistication.”

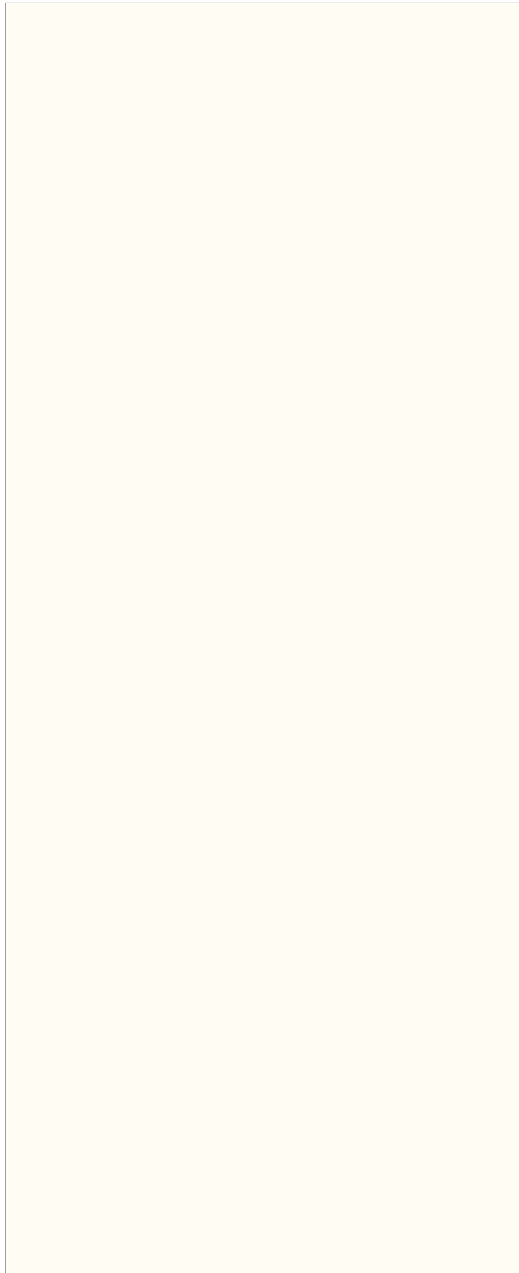
Leonardo Da Vinci



CORE

CORE

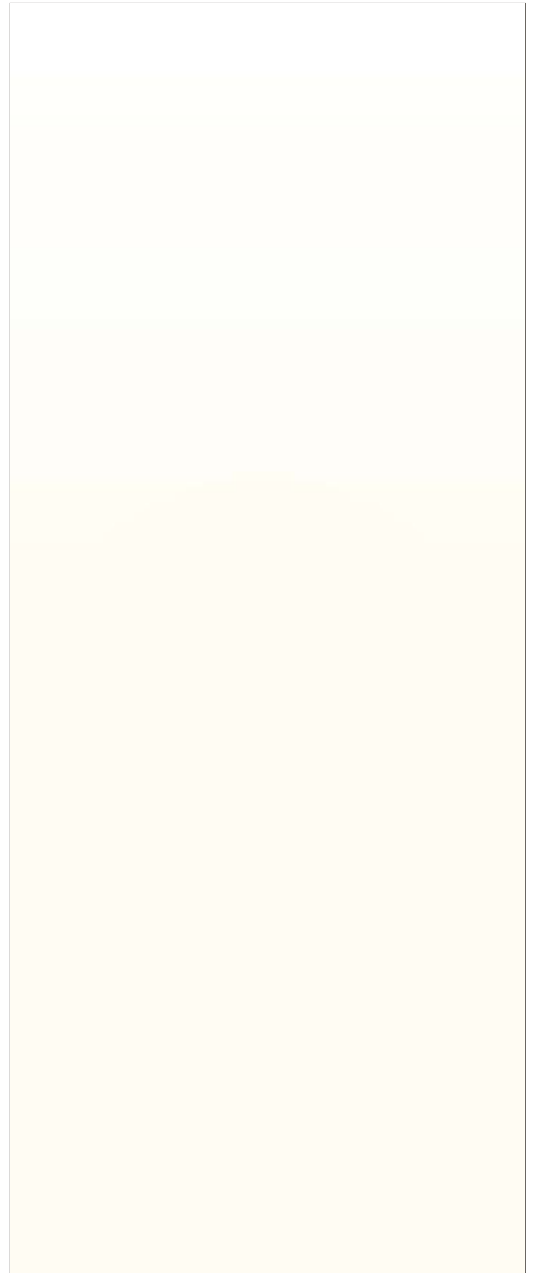
Smooth Texture



Off White
SSF 20026

MATT

Recommend



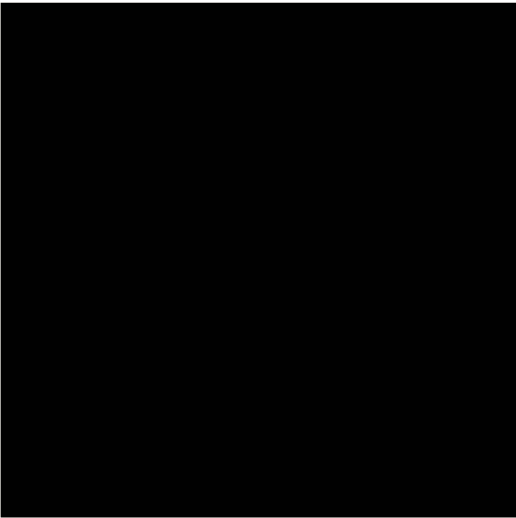
Off White
SSF 20026

HG

Recommend

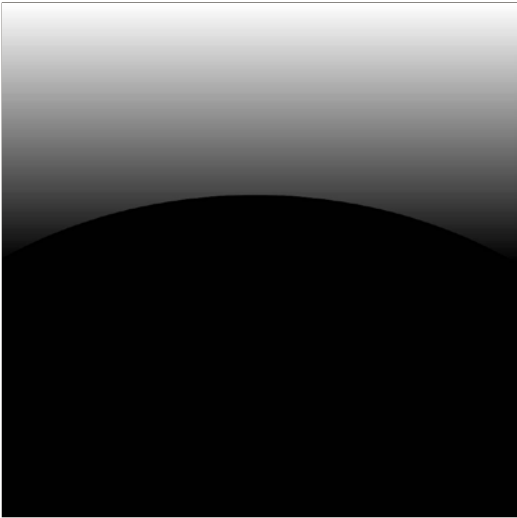
CORE

Smooth Texture



Ultimate Black
SSF 5142

MATT



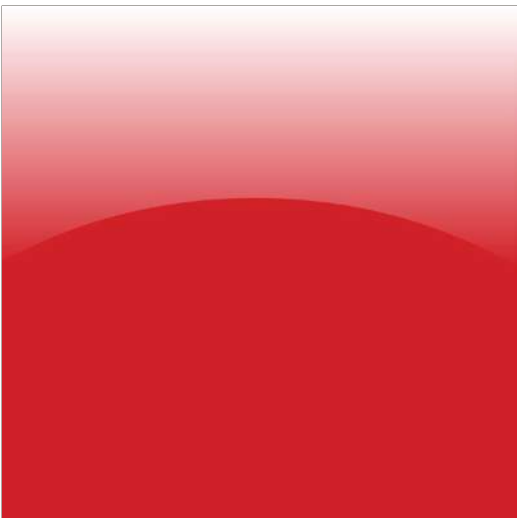
Ultimate Black
SSF 5142

HG



Blood Red
SSF 5554

MATT



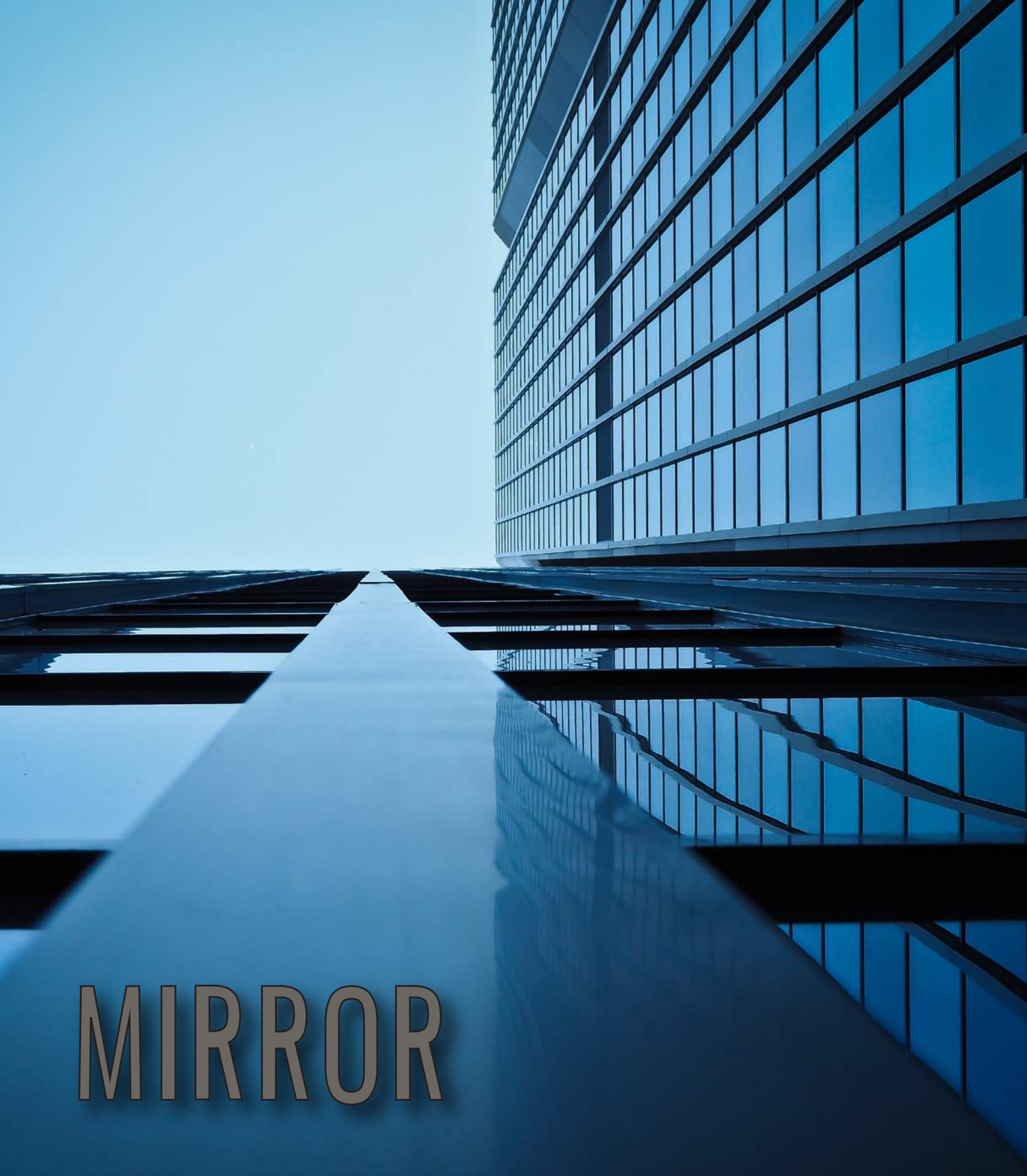
Blood Red
SSF 5554

HG

“**Mirror** is my **best friend**

because when I cry it never laughs.”

Charlie Chaplin



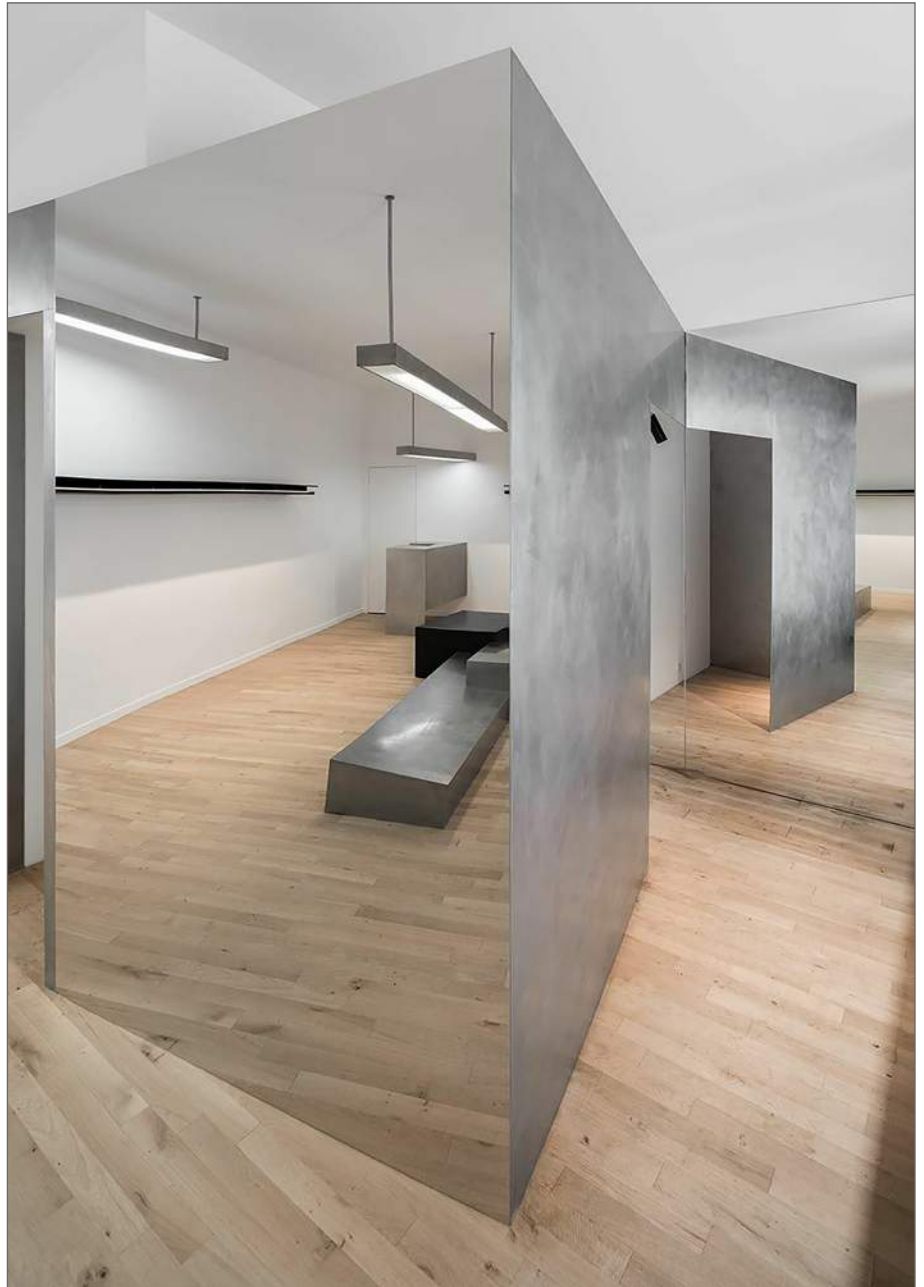
MIRROR

MIRROR

Smooth Texture



Chrome Mirror



MIRROR

Smooth Texture



Gold Mirror

INDEX

Design Name	Design Code	Finish	Page	Design Name	Design Code	Finish	Page	Design Name	Design Code	Finish	Page
Olde Rincon	SSF 2255	AU	3	Antilop (HZ)	SSF 7962	DM	10	Sandy Grey	SSF 1064	CL	24
Baltimore Walnut	SSF 2265	AU	3	Volvo Ash	SSF 2282	BK	11	City Shadow	SSF 1014	CL	24
Noce Brenta	SSF 2297	AU	3	Jakarta Teak	SSF 7103	TP	11	Cherry Brown	SSF 1018	CL	24
Rincon Wood	SSF 2256	AU	3	White Beech	SSF 7001	PO	11	Dark Blue	SSF 155	CL	24
Brenta Wood	SSF 2298	AU	3	Carmine	SSF 7281	TP	12	Slate Grey	SSF 569	CL	24
Season Wood	SSF 2312	AU	3	White Elm	SSF 7651	TP	12	White Fabric	SSF 1403	DM	25
Saltlo Wood	SSF 2294	AU	4	Dark Katthult	SSF 2263	TP	12	Offwhite Fabric	SSF 1398	DM	25
Chech Design	SSF 2063	AU	4	Catapult Light	SSF 2261	TP	12	Grey Fabric	SSF 1399	DM	25
Ulmus	SSF 7652	AU	4	White Beech	SSF 2183	TP	12	Chess Fabric	SSF 1394	DM	25
Cabin Nelson	SSF 2257	SG	4	Iconic Beach	SSF 2242	TP	12	Tweed Grey	SSF 1353	DM	26
Finesse Elegant	SSF 2258	SG	4	Lorraine Walnut	SSF 7710	TP	13	Light Fabric	SSF 1397	DM	26
Mountain Pine	SSF 7252	SG	4	Weeping Beech	SSF 7003	TP	13	Tweed Dark	SSF 1354	DM	26
Canadian Larch	SSF 7255	SG	5	Boston Walnut	SSF 7006	TP	13	Twist Treble	SSF 1420	TT	27
Walnut Brozne	SSF 7705	SG	5	Polished Walnut	SSF 7704	TP	13	White Aluminium	SSF 1410	TT	27
Scrub Oak	SSF 7411	SG	5	Intal Beech	SSF 7012	TP	14	Twist Magic	SSF 2206	TT	27
Ash Oak	SSF 7416	SG	5	Mangfall Beech	SSF 7007	TP	14	Brown Chess Wood	SSF 2204	TT	28
Salinas Oak	SSF 2219	SG	5	Salzach Beech	SSF 2271	TP	14	Fine Flannel	SSF 2207	TT	28
Highland Pine	SSF 7251	SG	5	Common Beech	SSF 7005	TP	14	Dark Flannel	SSF 2205	TT	28
Maracaibo Firm	SSF 2216	SG	6	Cherry Morgana	SSF 7282	TP	15	Onde Splash	SSF 1447	TT	28
Brown	SSF 7809	SG	6	Moldau Acacia	SSF 7801	TP	15	Shiny Chess Wood	SSF 2203	TT	28
Spring Hickory	SSF 2284	SG	6	Sweet Acacia	SSF 7813	TP	15	Black Chess Wood	SSF 2208	TT	28
Scots Elm	SSF 2285	SG	6	Golden Maple	SSF 7307	TP	15	Alumina Light	SSF 1383	FS	29
Ash	SSF 2117	SG	6	Walnut Brozne	SSF 7705	TP	15	Shinning Grey	SSF 1381	FS	29
Rugen Beech	SSF 2286	SG	6	Magical Oak	SSF 1929	RM	16	Light Aluminium	SSF 1411	FS	29
Medan Teak	SSF 2287	SG	7	Zebrano Wood	SSF 7651	RM	16	Lead Grey	SSF 1406	FS	29
Nomad	SSF 2295	SG	7	Linning Bat	SSF 2263	RM	16	Grey Feather	SSF 1404	FS	29
Fairfield Walnut	SSF 2309	SG	7	Shivalik Zebrano	SSF 2019	RM	16	Grey Unimetal	SSF 1407	FS	29
Sonoma Oak	SSF 7418	SC	7	Zebra Light	SSF 2054	RM	16	Tweed Chocolate	SSF 1402	FS	30
Noce	SSF 7709	SC	7	Art Wood	SSF 2317	RM	16	Dark Aluminium	SSF 1409	FS	30
Crest Wenge	SSF 7506	SC	7	Grey new marble	SSF 1461	GL	19	Grey Aluminium	SSF 1408	FS	30
Golden Wenge	SSF 7504	SC	8	Cinder Zebra	SSF 1460	GL	19	Copper	SSF 9584	MT	33
Shining Wenge	SSF 7510	SC	8	Santa Marble	SSF 1459	GL	19	Gold	SSF 9585	MT	33
Salinas Pastel	SSF 2218	SC	8	Natsu	SSF 1445	GL	19	Silver	SSF 9598	MT	33
Flowerish Wenge	SSF 7501	SC	8	Light New Marble	SSF 1462	GL	19	Green	SSF 9582	MT	34
Palau Wood	SSF 2118	SK	9	Zebrawood Marble	SSF 1458	GL	19	Blue	SSF 9583	MT	34
Congo Wood	SSF 2126	SK	9	Cityscape Loft	SSF 1455	SS	20	Red	SSF 9581	MT	34
Black Wenge	SSF 1995	SK	9	Mohave Stone	SSF 1441	SS	20	Off White	SSF 20026	Matt	37
Wild Ebony	SSF 2125	SK	9	Roman Travertine	SSF 1452	SS	20	Off White	SSF 20026	Hg	37
White Teak (HZ)	SSF 2091	DM	10	Travertin	SSF 1454	RK	20	Ultimate BLACK	SSF 5142	Matt	38
Natural Wood (HZ)	SSF 2093	DM	10	River Birch	SSF 1416	CL	23	Ultimate BLACK	SSF 5142	Hg	38
Silica (HZ)	SSF 7959	DM	10	Yellow Birch	SSF 1417	CL	23	Blood Red	SSF 5554	Matt	38
Weasel (HZ)	SSF 7961	DM	10	Lead Grey	SSF 1406	CL	23	Blood Red	SSF 5554	Hg	38
Charcoal Teak (HZ)	SSF 2094	DM	10	Grey Feather	SSF 1404	CL	23	Chrome Mirror			41
								Gold Mirror			42

PRODUCT INFORMATION

Technical Data Sheet

Sl. NO.	PROPERTIES	UNIT	SPECIFIED VALUE		FINENESS TYPICAL VALUES
			IS 2046-1995	BS EN 438	
1	Thickness	mm	1 ± 0.10	1 ± 0.10	1 ± 0.10
2	Resistance to immersion in boiling water				
	a) Mass increase	%, Max.	10	10	7.5
	b) Thickness increase	%, Max	12	12	8.5
	c) Appearance	Grade, Min.	4	4	4
3	Resistance to surface wear	Rev. Min.	350	350	380
4	Resistance to dry heat at 180° C				
	a) Appearance : Gloss	Grade, Min.	3	3	4
	b) Appearance : Others	Grade, Min.	4	4	5
5	Dimensional Stability at 20° C	(L)%, Max.	0.55	0.55	0.40
		(T)%, Max.	1.025	1.025	0.85
6	Dimensional Stability at elevated temperature	(L)%, Max.	0.375	0.375	0.25
		(T)%, Max.	0.625	0.625	0.50
7	Resistance to impact by small diameter ball	N, Min.	20	20	30
8	Resistance to scatching	N, Min.	2	2	2.5
9	Resistance to staining :				
	a) Group 1 & 2	Grade, Min.	5	5	5
	b) Group 3 & 4	Grade, Min.	4	4	5
10	Resistance to cigarette burns	Grade, Min.	3	3	4
11	Resistance to cracking	Grade, Min.	4	4	5
12	Resistance to steam	Grade, Min.	4	4	5
13	Resistance to colour change in				
	a) Xenon arc light	Grade, Min.	6	6	6
	b) Enclosed Carbon Arc Light	Grade, Min.	5	5	5

Refined Technology

All Fineness laminates are made using state-of-the-art technology that encompasses worldwide standards on safety and environmental sustainability.

Certification



Availability

- Unless mentioned otherwise, the designs would be available in suede finish and a standard size of 1220 mm × 2440 mm (4' X 8')
- Upon special request and after confirmation from our factory, other finishes, namely matte and gloss, can be made available.
- The '*' symbol is meant for designs that are also available in the size of 1300 mm × 3050 mm.
- Fineness Laminates are also available in post-forming format.
- We recommend metal laminates only for vertical application.
- The thickness of our laminates for the domestic market are 1.0 mm and 1.5 mm. For the export market, the thickness varies with requirement.

Laminate User Guide

- Before bonding, always ensure that you level the surface and free it from oil, moisture, grease, dust and other contaminants.
- The bond will become weaker if you add water to any adhesive.
- Do not cut at 90° angle to avoid cracks. And round off corners after fixing the laminate.
- Once tackiness is achieved (it may take 20–40 minutes, depending on the prevalent atmospheric conditions on the site), the laminate should be placed on the surface, accurately aligned and pressed down firmly to ensure proper bonding.
- During alignment and pressing, no air gap or air bubbles should remain between the surface and the laminate.
- Keep the pasted portion under sufficient pressure for a period of 6 to 12 hours, for proper bonding. The rate of drying may vary according to the surface and atmosphere.
- Use soft soap solution for cleaning.

Laminate Care Guide

- Acidic or abrasive cleaners can damage laminate surfaces; do not use them.
- Drain cleaners containing lye will permanently damage the laminate surface. If you spill a drain cleaner, wipe it up immediately and rinse several times with water.
- Hair, textile and food dyes can cause permanent stains. If dye should happen to spill, wipe it up immediately with dishwashing detergent or an all-purpose cleaner.
- Never place pots or dishes directly from the oven or burner on an unprotected laminate surface; such extreme heat can cause cracking or blistering.
- Do not work with oven cleaners on an unprotected countertop. Wipe spills away promptly and rinse several times with water.
- Rust removers contain harsh chemicals which will quickly cause permanent damage. If a spill occurs, wipe off all residue immediately, wash thoroughly with soapy water and rinse several times.

Our Warranty

At no cost to the Original Purchaser, we will provide, at its option, repair or replacement of the warranted product.

This warranty does not cover fabrication or installation, is not transferable and is extended only to, and may only be enforced by, the Original Purchaser. It is expressly conditioned upon submission of proof of purchase.

WHAT IS EXCLUDED

This warranty shall not apply to damage arising from any of the following:

- Accidents, abuse or misuse
- Fabrication, installation, alterations or repairs
- Exposure to extreme temperature changes
- Exposure to harsh or corrosive chemicals and cleaners
- Excessive weight placed on countertop
- Structural support or movement
- Improperly installed, used and/or maintained appliances
- Acts of nature

www.finenesslam.com